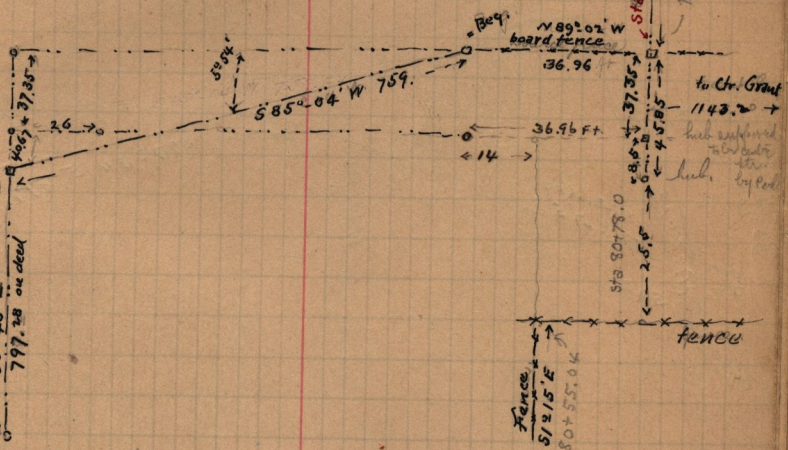
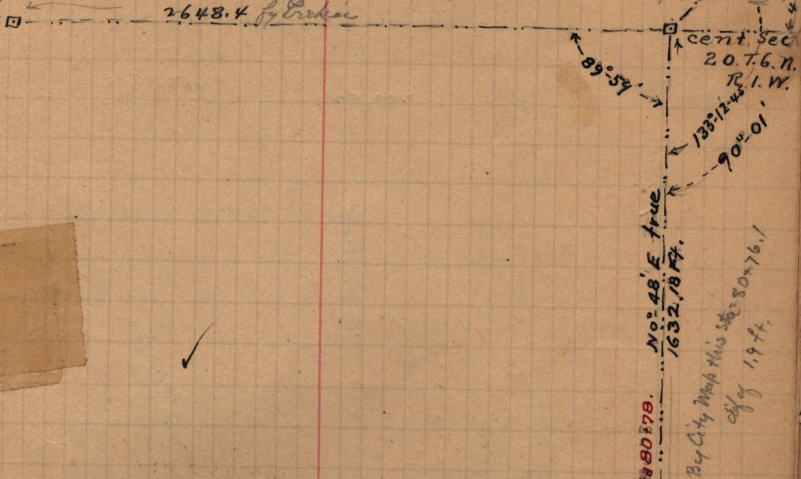


March 1st 1892, Survey made for Shaw brothers in Sec 20 T. 67 N. R. 1 W - Gracieh Shaw & Henry Shaw

Eyre PK
R.P.C.



E-94 John H. Restall to Myrtilla Shaw, April 7-1870
Part of the S.W 1/4 Sec 20 T. 67 N. R. 1 W. - Beg. 24.73 ch S. 9 and 5.6 ch
N. of N.E. cor. 585°04' W, 11.50 ch S 0°48' E 12.03 ch
N 71°27' E 8.01 ch - S 87°34' E 4.24 ch - N 1°56' W, 10.10 ch
to beg. 12.75 ch.

W. line of above abt Sta 72+96